



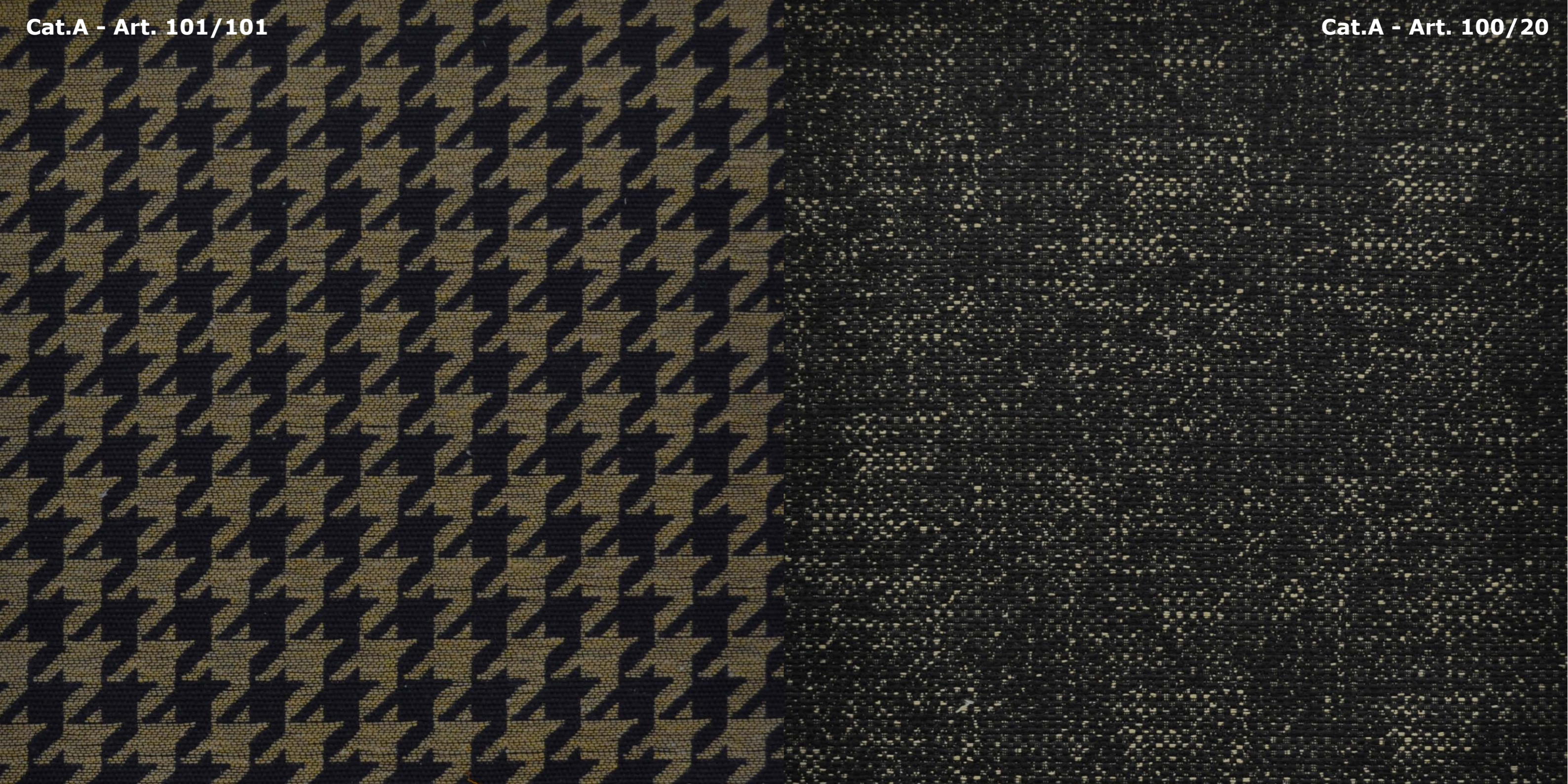
bortoli[®]
when ethnic meets design

FABRICS 2016

Cat.A - Art. 101/107

Cat.A - Art. 100/19

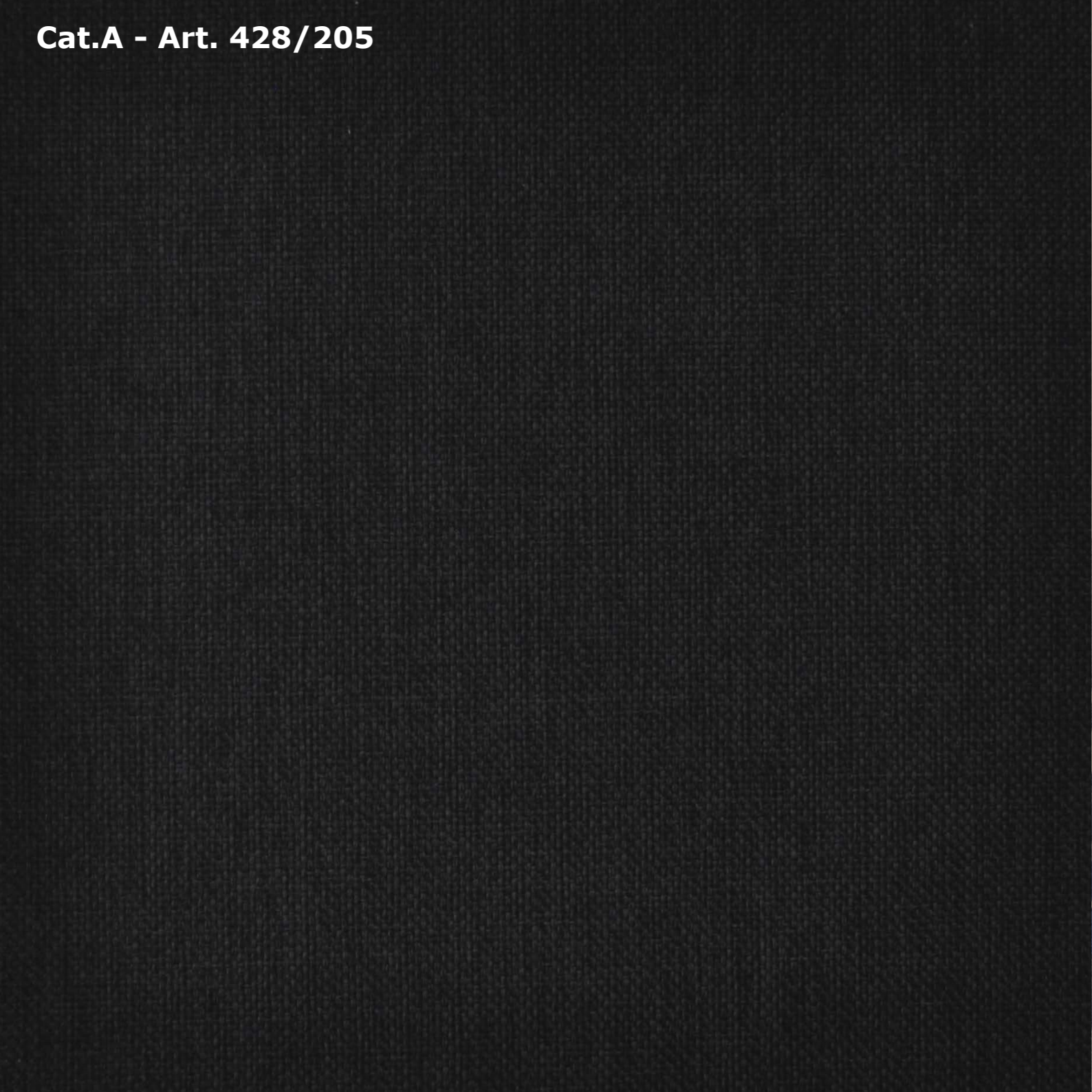








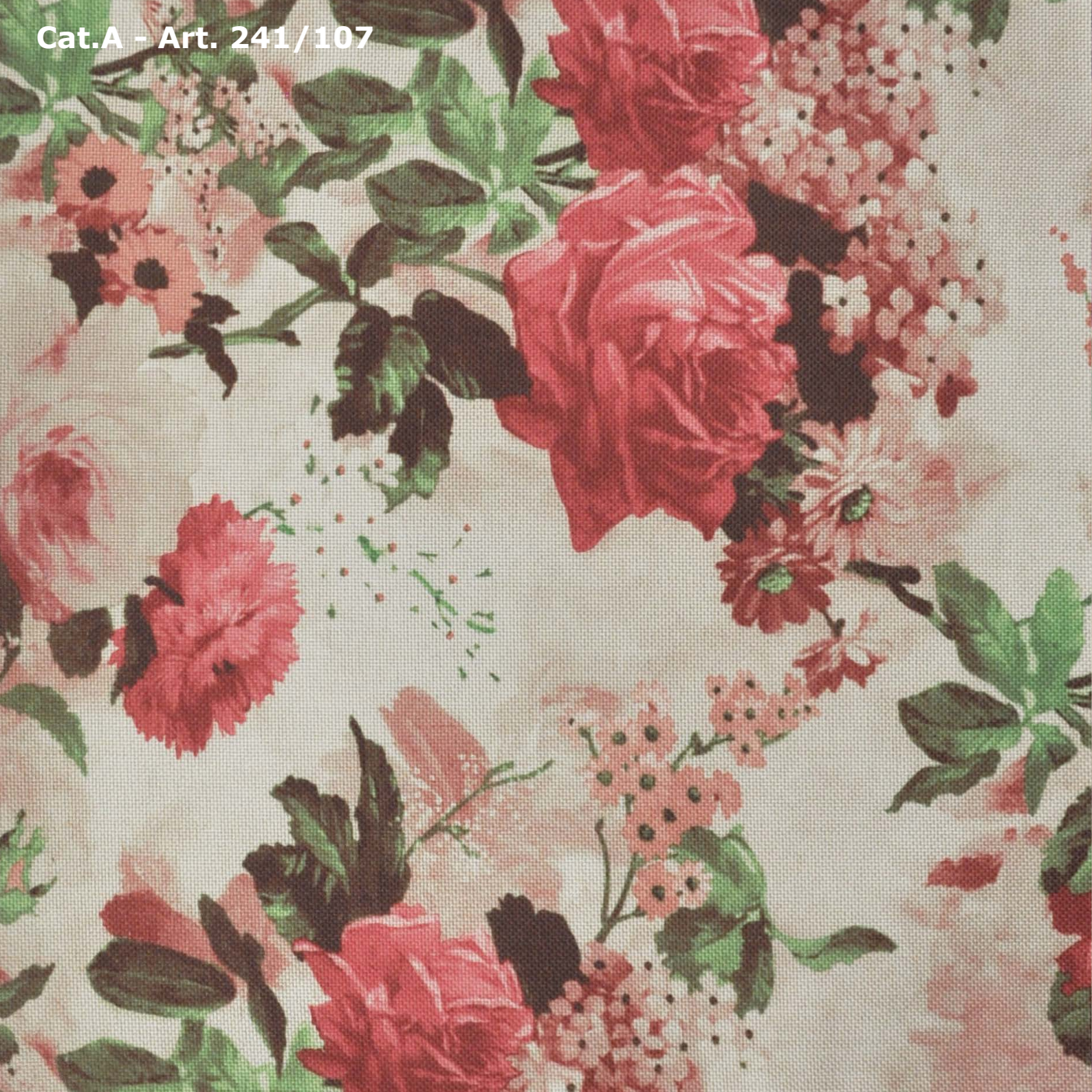






Cat.A - Art. 105/07

Cat.A - Art. 105/24



Cat. B

Cat.B - Art. 427/90

Eccopelle

Cat.B - Art. 914/342

Cat.B - Art. 914/901

BORTOLI SNC

CATALOGO STOFFE 2016

Attenzione: i colori a video sono da considerarsi solo indicativi.
Non ci assumiamo responsabilità se la stoffa dei cuscini risulterà
di un colore diverso rispetto a quella visualizzata.

FABRICS CATALOGUE 2016

Warning: colors on screen are have be considered indicative only.
We don't assume responsibility if the fabric of the cushions have
a different color than the one shown on screen.

Uffici e magazzino - Office and warehouse:

Via dell'artigianato, 54
36064 Mason Vicentino (Vicenza) Italia

Sede legale - Registered Office:

Via Ponticello, 46
36060 Molvena (Vicenza) Italia
Partita IVA IT 01779650249

Contatti - Contacts:

Tel. 0039 0424 41 11 10
Fax 0039 0424 41 10 25
www.bortoli.t
info@bortoli.it